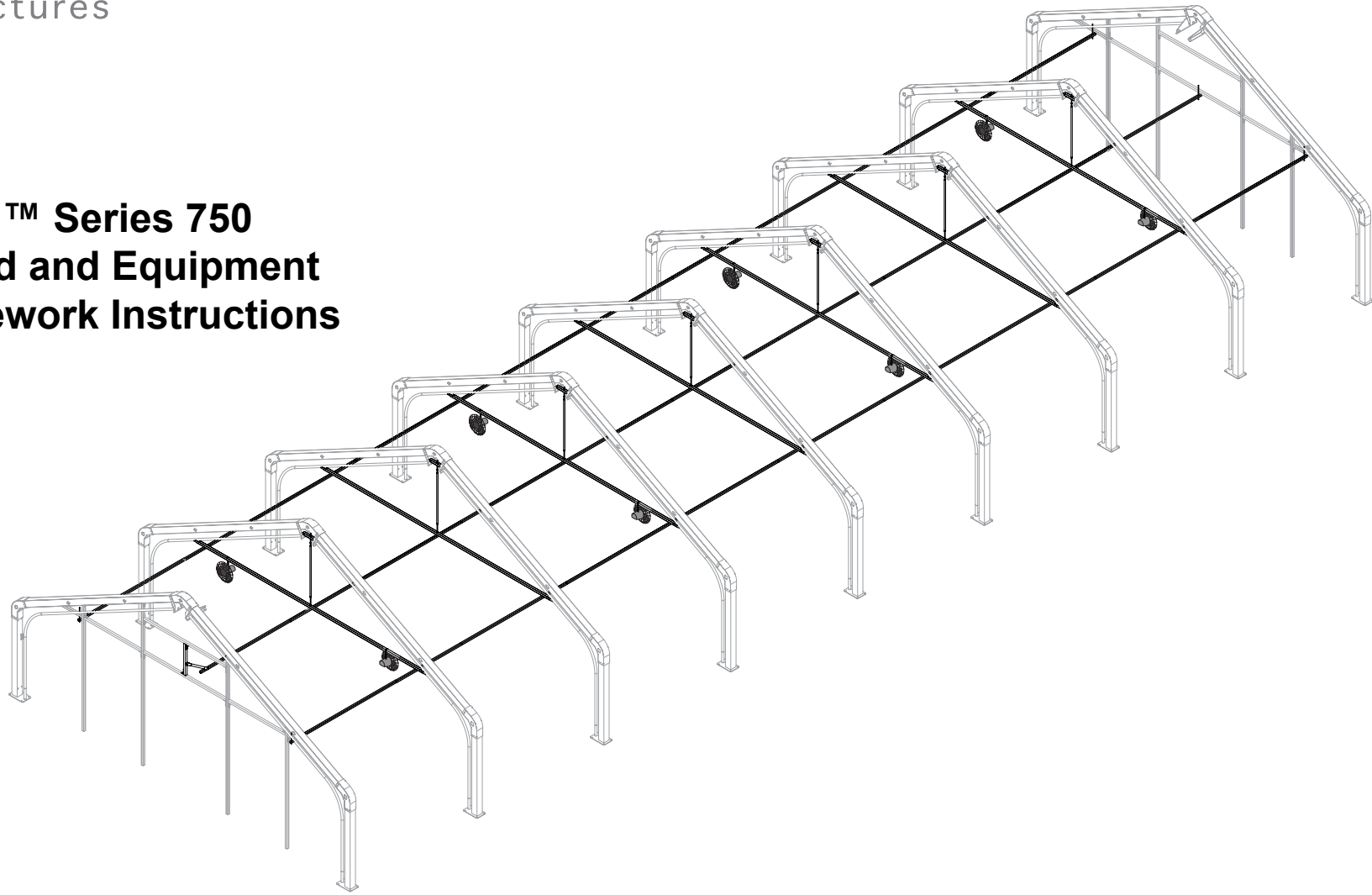




GrowSpan™ Series 750 Support Chord and Equipment Hanging Framework Instructions



WARNING: Cancer and Reproductive Toxicity - P65Warnings.ca.gov

©2021 GrowSpan™
All Rights Reserved. Reproduction is prohibited without permission.

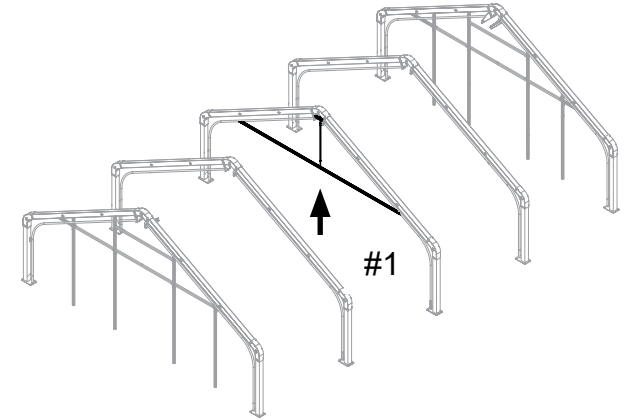
NOTE: Some components removed for clarity. Actual frame may differ. All applications are the same. Adjust accordingly.

Revision date: 07.01.21

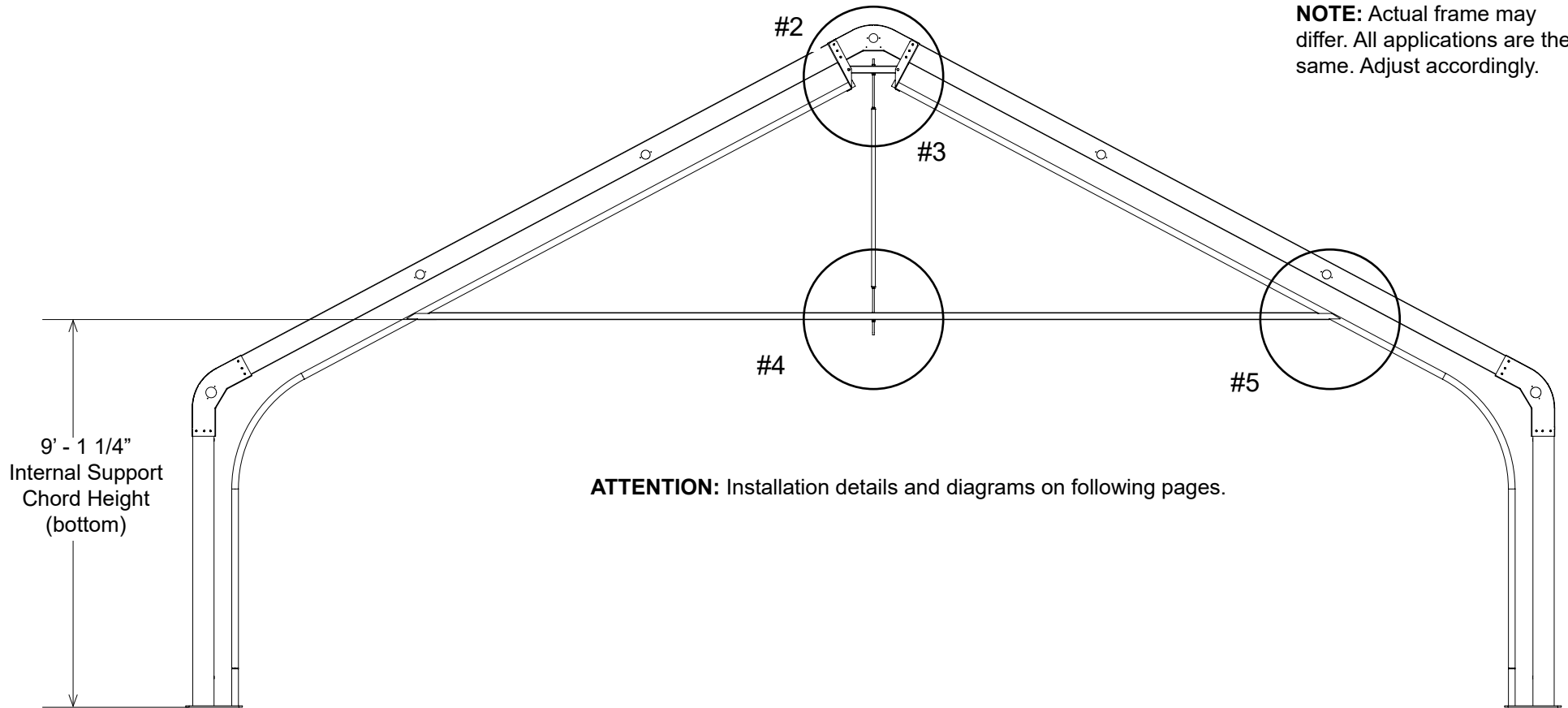
Installation Instructions

General Support Chord Installation:

1. Verify rafter onto which support chord is to be installed. If installing to support supplied circulation fans for a catalog standard *only*, consult "Standard Layout by Length" page near the end of these instructions, otherwise, install additionally purchased support chords onto rafters as desired.
2. Install chord hanging peak bracket.
3. Hang supporting threaded rod assembly.
4. With assistance, hoist support chord into place. Suspend in place using threaded rod assembly.
5. Ensure chord is at the shown height & is level and secure to internal blackout rafters using Tek screws.
6. Repeat as needed to install all support chords.



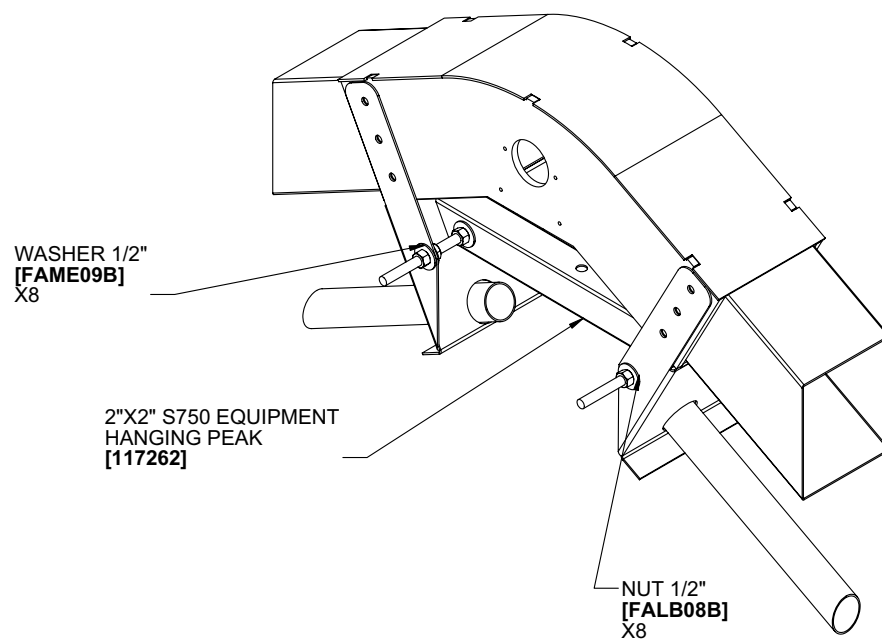
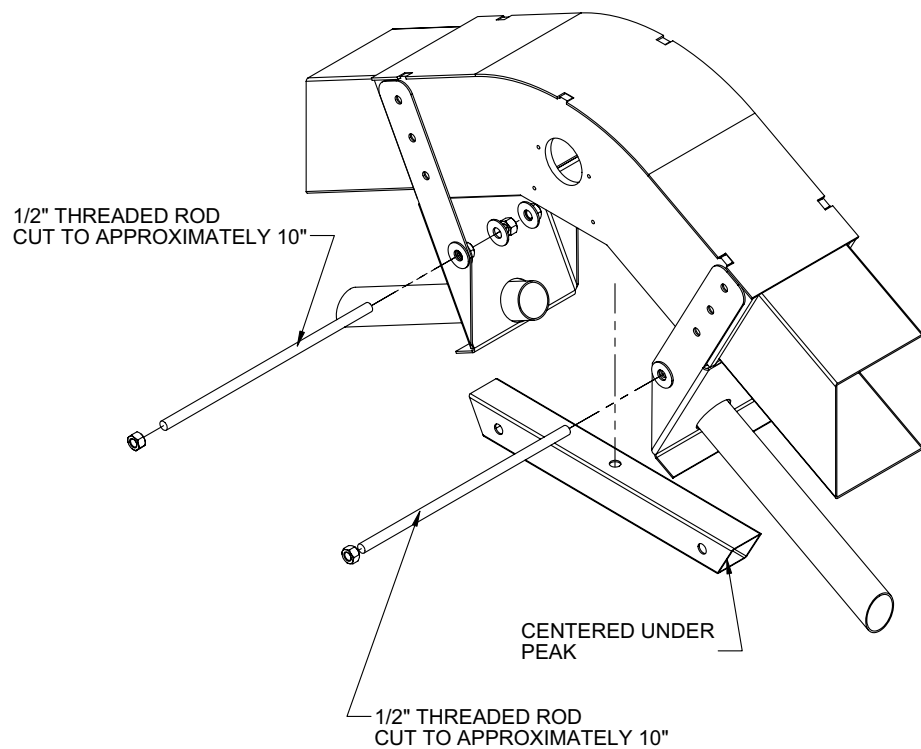
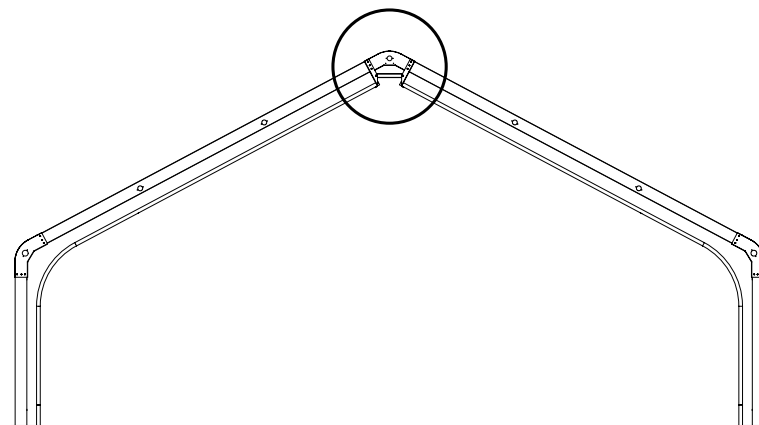
NOTE: Actual frame may differ. All applications are the same. Adjust accordingly.



Installation Instructions

Install Chord Hanging Peak Bracket:

1. Locate provided 1/2" threaded rod (FAK37) and cut two sections at 10" each.
2. Using 1/2" washers and 1/2" nuts, attach the 117262 hanging peak to the peak rafter assembly by inserting the cut sections of the threaded rod through the pre-drilled holes in the peak assembly and hanging peak bracket as shown below.
3. Verify hanging peak is centered under the rafter and tighten the 1/2" nuts and washers.

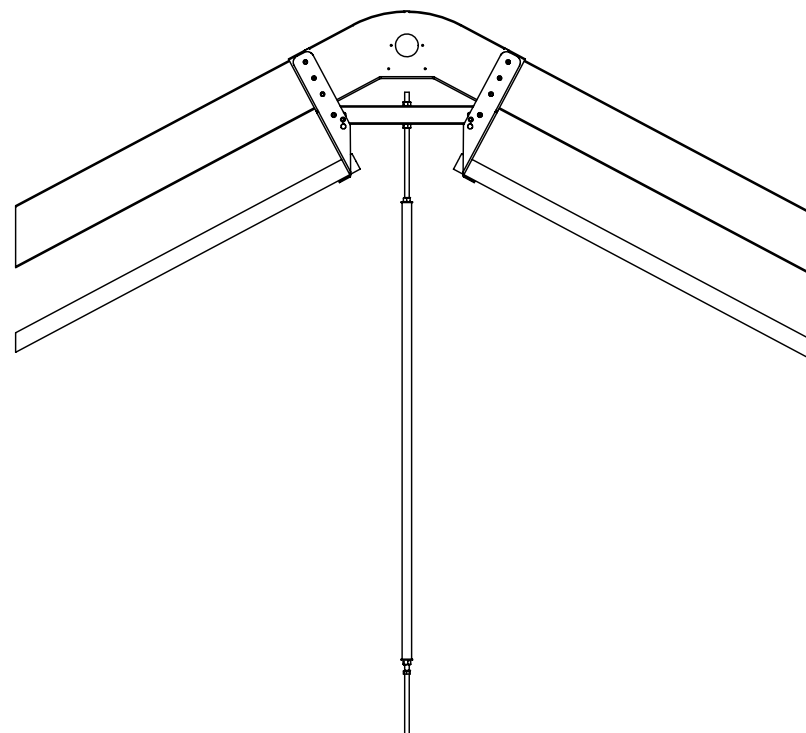
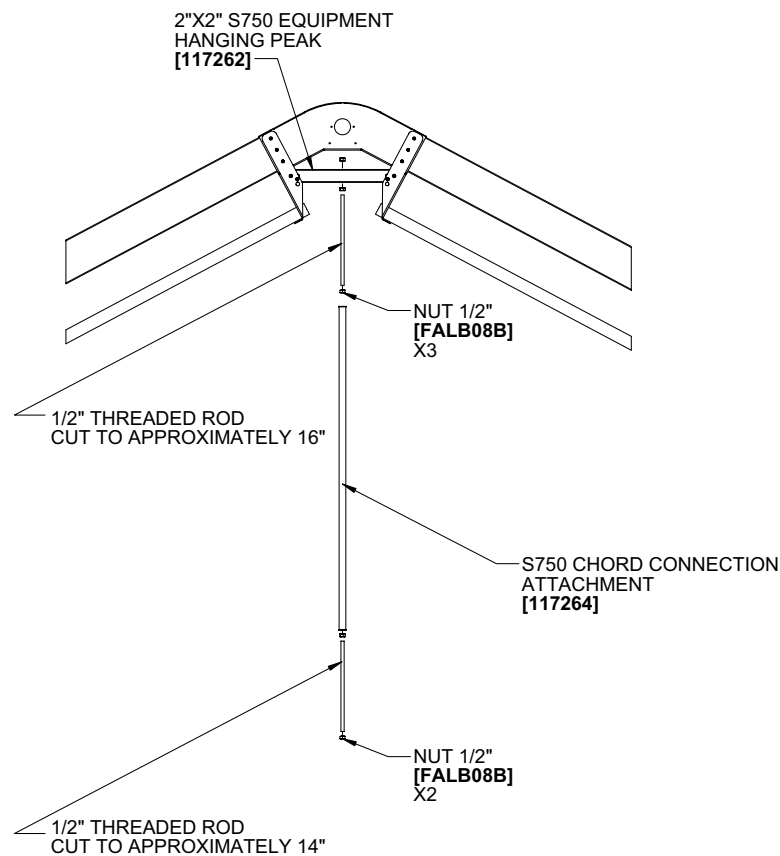
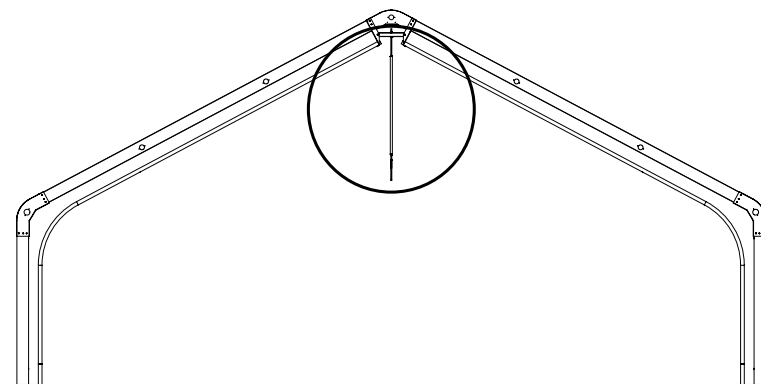


Installation Instructions

Hang Supporting Threaded Rod Assembly:

1. Locate provided 1/2" threaded rod (FAK37) and cut two sections: one at 16" (top) and one at 14" (bottom).
2. Thread the cut sections of threaded rod approximately 2" into each tapped insert end of the 117264 support assembly tube. Threaded rod adjustments are made in a later step.
3. Thread two 1/2" nuts each onto the threaded rods at the ends of the support assembly.
4. Using an additional 1/2" nut, attach the 16" threaded rod end of the support assembly to the hanging peak, as shown.

IMPORTANT: Ensure that the threaded rod and nut protruding up through the hanging peak does not interfere with the drive shaft, or will not interfere with the drive shaft, once installed.



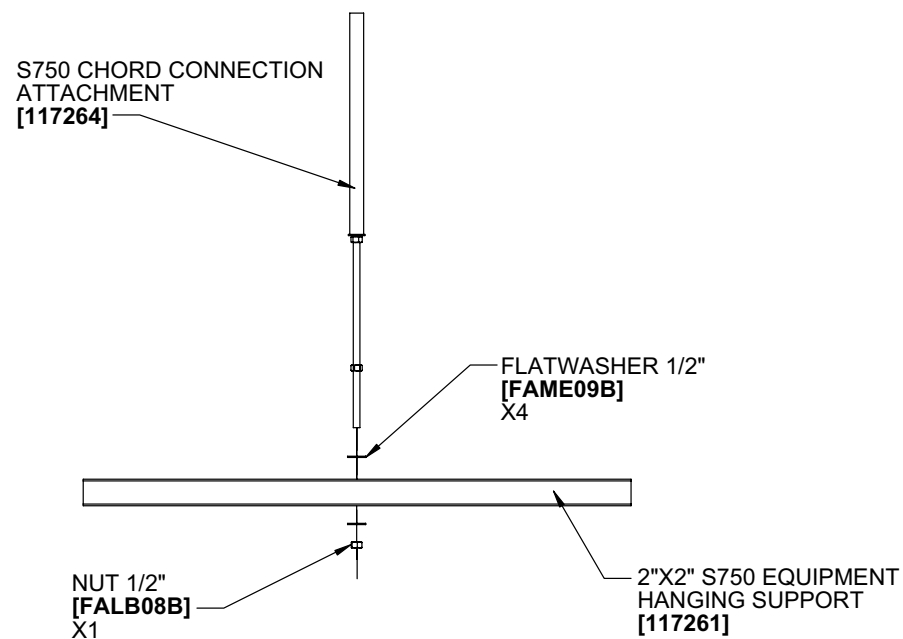
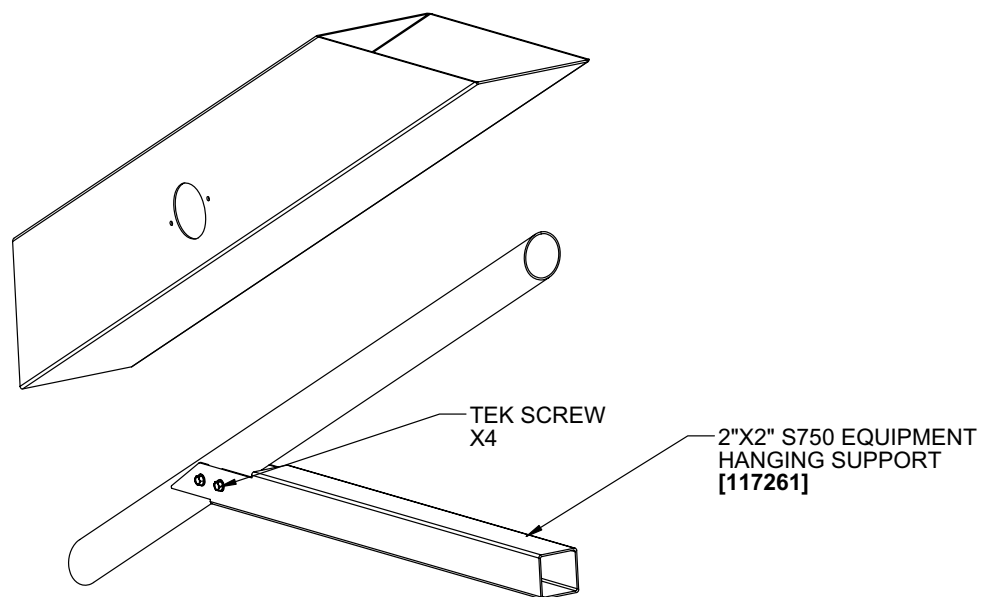
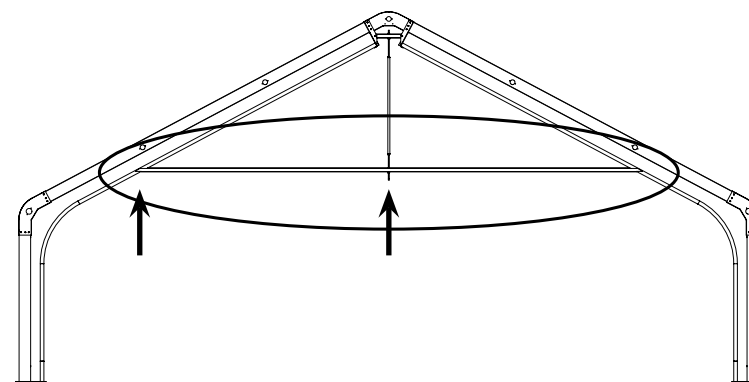
Installation Instructions

Install Support Chord:

1. With assistance, hoist the 117261 support chord into place as shown, ensuring that the open end of the hanging threaded rod assembly goes through the pre-drilled hole in the center.

ATTENTION: Place a 1/2" washer on the threaded rod before guiding through the center hole.

2. Place a 1/2" washer onto the open threaded end and suspend support chord in place with a 1/2" nut.
3. Adjust nuts as needed to ensure the support chord is level and secure to the blackout rafters with Tek screws as shown.
4. Tighten all nuts on the threaded rod assembly.

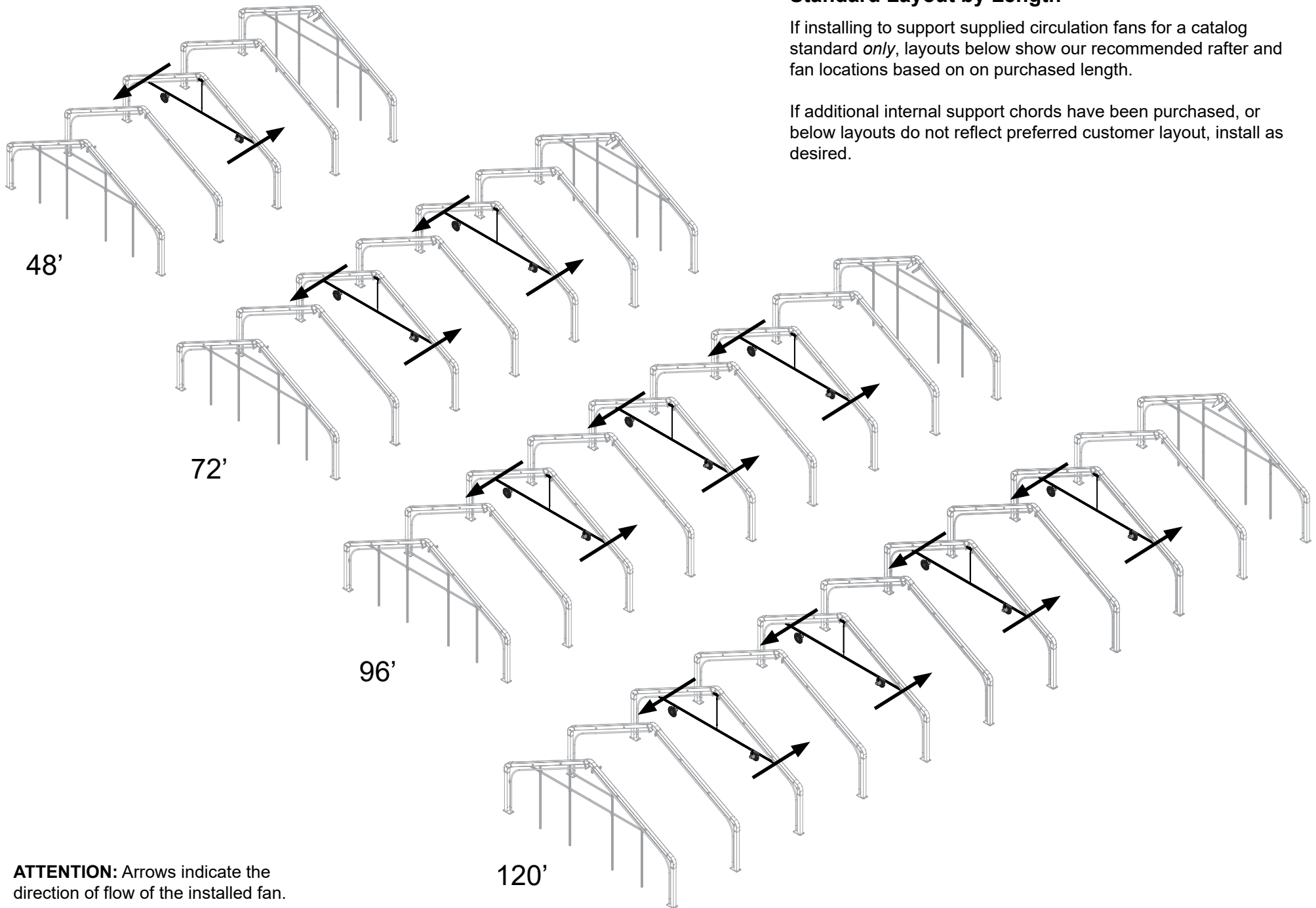


Installation Instructions

Standard Layout by Length

If installing to support supplied circulation fans for a catalog standard *only*, layouts below show our recommended rafter and fan locations based on on purchased length.

If additional internal support chords have been purchased, or below layouts do not reflect preferred customer layout, install as desired.



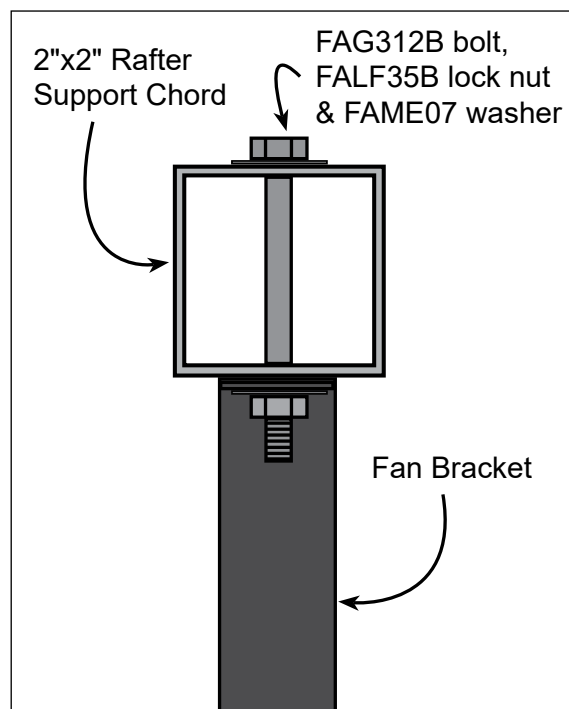
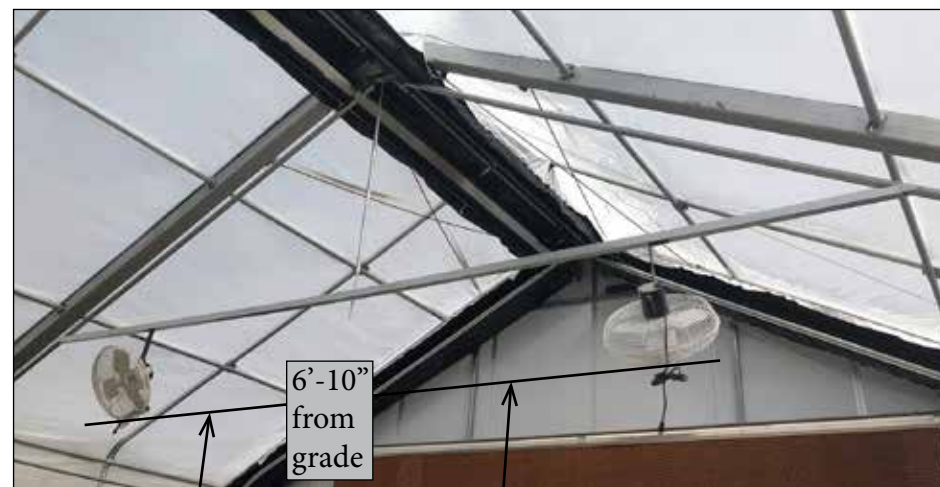
ATTENTION: Arrows indicate the direction of flow of the installed fan.

Installation Instructions

Install Ceiling Fans:

Fans come with S750 catalog standard "E" models or are sold separately.

1. Consult layout diagrams on the previous page to determine fan locations. Avoid obstructing other structural components. See *clearance note at the bottom of the page if shown fan height is problematic.*
2. Using the fan mounting brackets, mark and vertically drill 5/16" through-holes through the 2"x2" support chord.
3. Attach using FAG312B bolts, FALF35B lock-nuts, and FAME50B flat washers. Verify orientation matches diagrams below based on purchased shelter length.
4. Repeat for all included fans. Consult manual included with fan for further installation instruction.



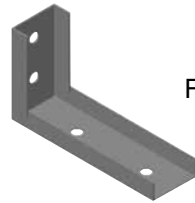
IMPORTANT CLEARANCE NOTE: When installed as shown, the bottom of the circulation fans will be at a height of approximately 6'-10". If this clearance is too low for desired greenhouse operation, fans can be flipped and attached to the TOP side of the support chord. Installation is the same.

Installation Instructions

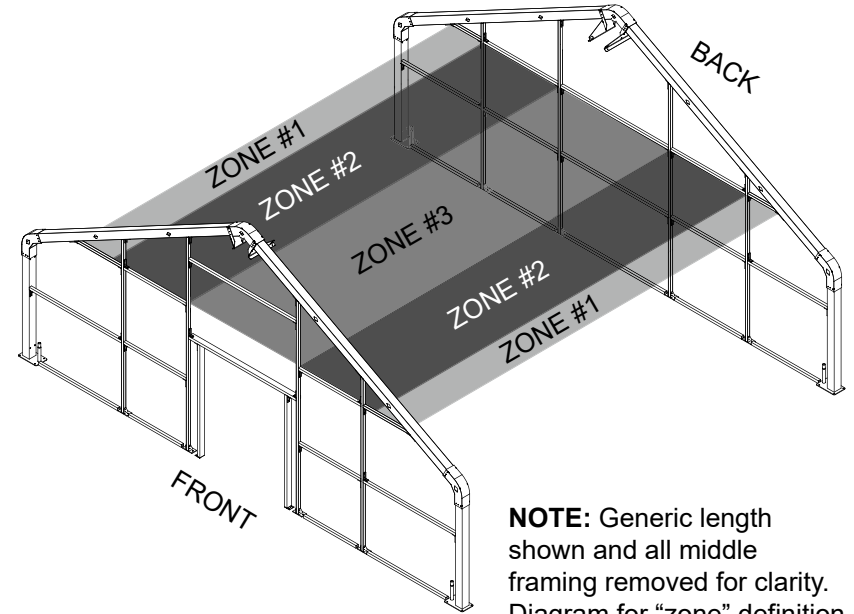
Install Equipment Hanging End Wall Support:

Equipment hanging end wall support is included in separately purchased equipment hanging component kits. These components are only needed if there is a fixed element on an end wall—such as an evaporative cooling wall or an exhaust fan—that obstructs equipment hanging framing from being attached directly to the end wall.

1. Consult zone layout to the right. If installing a run of equipment hanging framing in zones #2 or #3, additional framing in the end walls is required. Reference pertaining diagram layouts below for relevant framing details.
2. Using QH1330 brackets and FA4482B Tek screws, install cut-to-fit 2"x2" steel tubing end wall framing as needed based on desired location(s) of equipment framing.

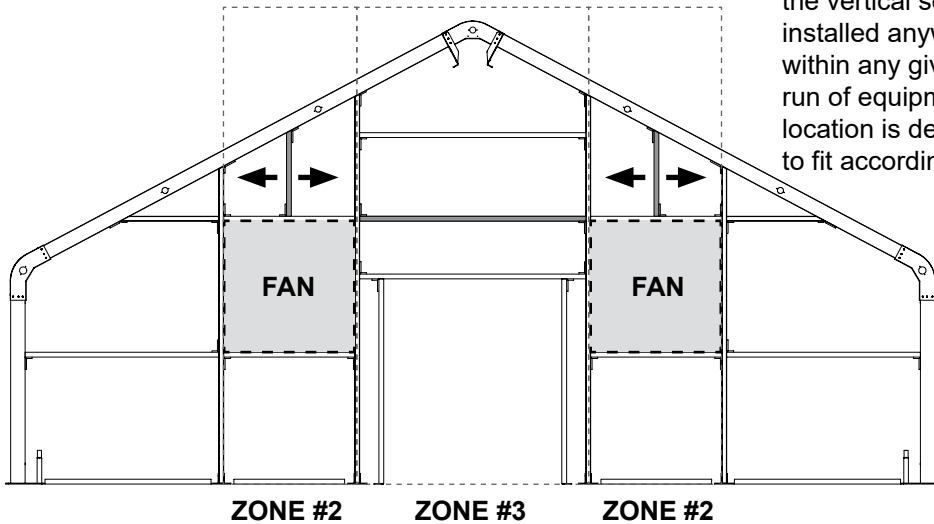


QH1330
Framing Bracket



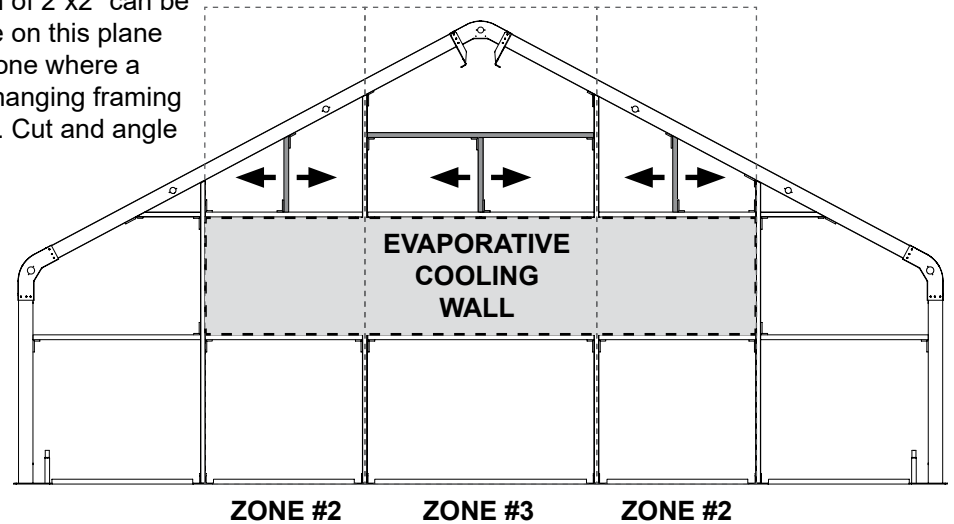
NOTE: Generic length shown and all middle framing removed for clarity. Diagram for "zone" definition only. Adjust accordingly.

FRONT END WALL



ATTENTION: Arrows indicate that the vertical section of 2"x2" can be installed anywhere on this plane within any given zone where a run of equipment hanging framing location is desired. Cut and angle to fit accordingly.

BACK END WALL



Installation Instructions

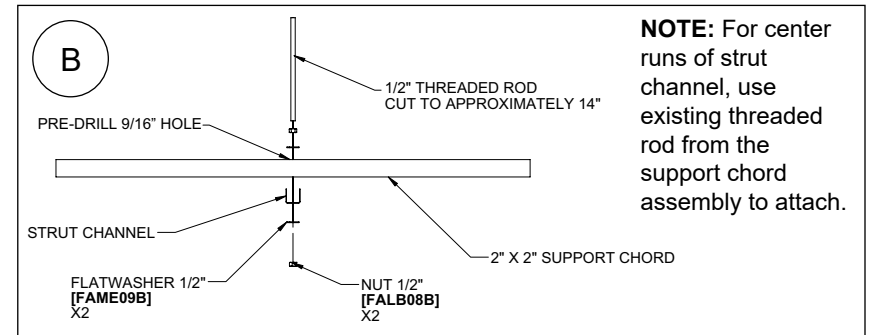
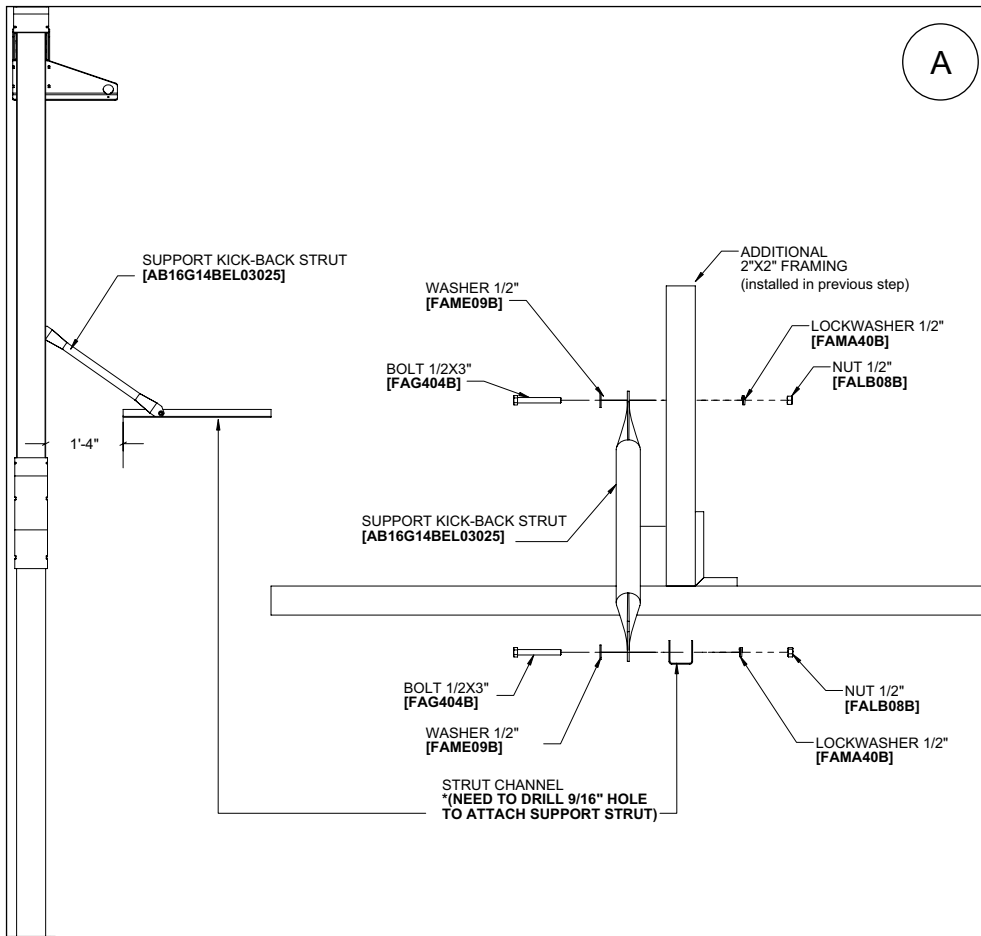
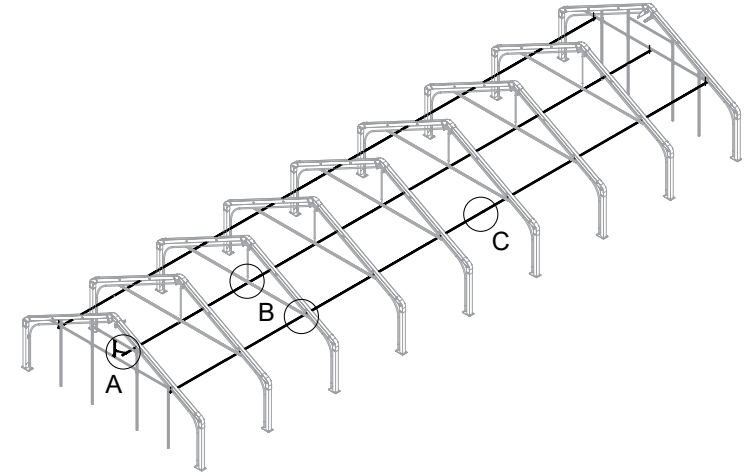
Install Equipment Hanging Framing:

Equipment hanging framing only comes with separately purchased kits.

- Using either A) support kick-back hardware or B) threaded rod, install a run of equipment hanging strut channel to the underside of the support chords in desired location. *Pre-drill 9/16" attachment holes in the support chords/end wall framing.* See diagrams below.

IMPORTANT: When attaching strut channel to the BACK end walls, verify that there is a 1-3/4" space between the 2" x 2" end wall framing and the strut channel.

- Splice strut channel as needed using 117082 splice brackets and splice hardware shown below.
- Repeat for all runs of equipment hanging framing.



NOTE: For center runs of strut channel, use existing threaded rod from the support chord assembly to attach.

