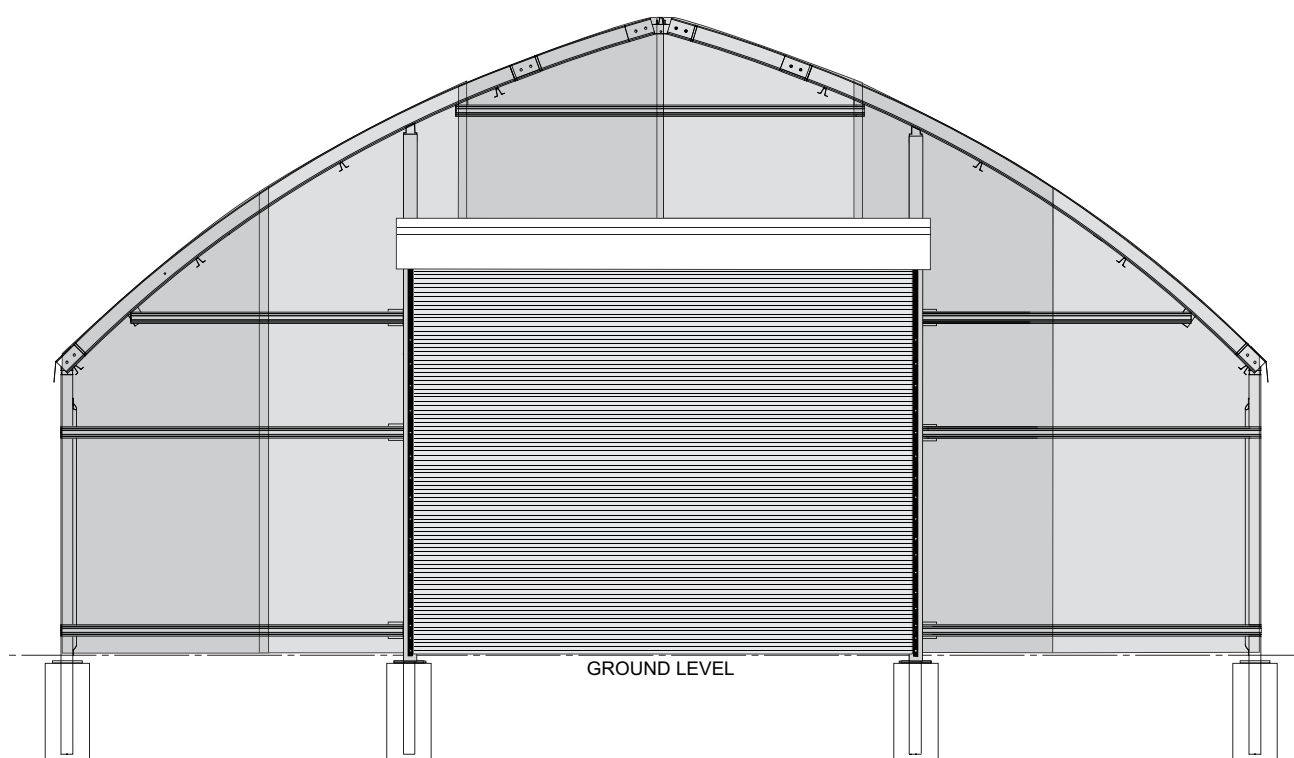




## Reverse Coiling Door with Hood



*Diagram shows a exterior mount roll-up door centered and attached to an end wall frame. The door kit includes materials for the door frame, door, and door hood only. All other components shown in the diagram above and other diagrams throughout this guide are not included and require additional purchase. They are used to show door placement. Actual frame may differ.*

# Table of Contents

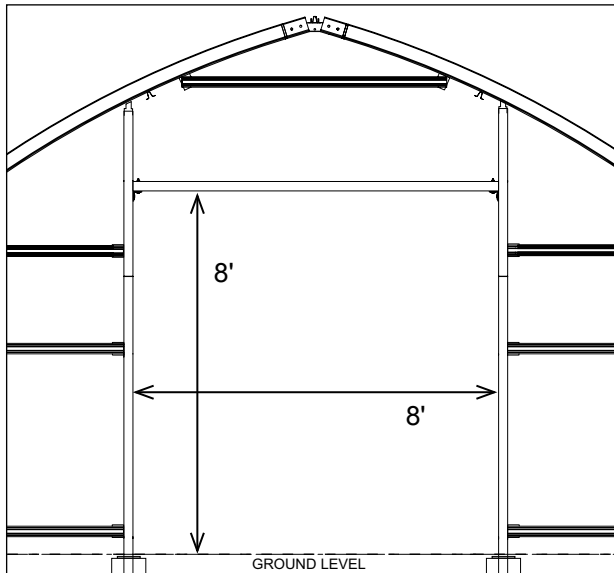
|                                       |    |
|---------------------------------------|----|
| Important Information .....           | 3  |
| Door Frame Assembly .....             | 5  |
| Care and Maintenance .....            | 10 |
| Quick Start Guide .....               | 11 |
| Door Frame Layout - Door Jambs .....  | 12 |
| Door Frame Layout - Door Header ..... | 13 |

## ATTENTION: ACTUAL FRAME MAY DIFFER!

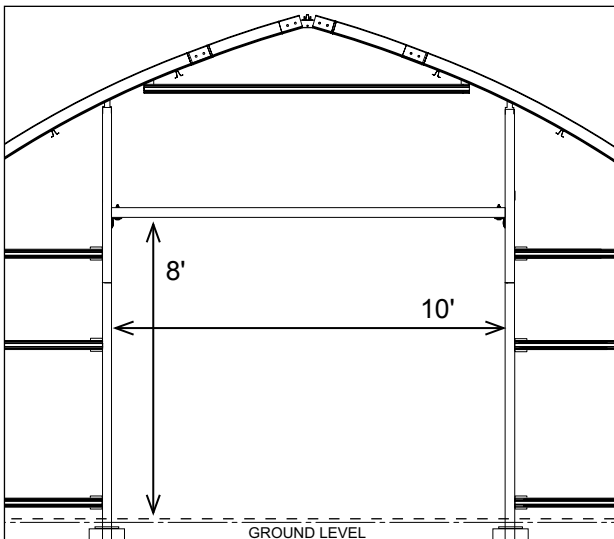
Use the R020B00013A (8' x 8') door kit for the 20', 24', 30' or 35' wide roll-form end wall frame.

Use the R024B00013A (10' x 8') door kit for the 24', 30', or 35' wide roll-form frames. *The 10' x 8' door will not fit the 20' wide roll-form end frame.*

### Door Dimensions (Inside-to-Inside)



R020B00013A (8' x 8')



R024B00013A (10' x 8')

## REVERSE COILING DOOR WITH HOOD: READ THIS BEFORE YOU BEGIN

The door kit is designed to attach to the end wall frame of your roll-form building. These instructions and the instructions for the end wall kit for your roll-form building are written to be used together. If you have not installed the end frame, consult these instructions as you assemble the framing for both the door and the end wall. Adjust dimensions as needed to accommodate the door installation and location.

**NOTE:** All door kits are designed to install *in the center of the end wall*. When installing a door in the end wall, some end frame components may not be used.

If you have already installed the end frame, use these instructions to determine the best location for the door and remove the end framing as needed to install this door kit. Reinstall end frame as described in this guide.

If you are installing this door kit in an end wall that is not one of the roll-form end walls, use these instructions for critical dimensions and details.

Consult the services of a qualified contractor if needed. *It is the responsibility of the owner/contractor to adapt these instructions to safely and competently install this door in an end wall or building that it was not designed for.*

Complete these steps to begin and to install the door:

1. Review the diagrams from this manual and the end wall assembly guide. (See the note below.) Center the roll-up door in the end wall frame of your roll-form building.
2. Assemble and secure the door frame to the end wall frame (if assembled) or the end rafter of the building.
3. Complete the installation of all end wall framing.
4. Attach the door to the door frame using the instructions sent with the roll-up door.

**NOTE:** If you purchased a fabric end panel to cover the end wall frame, install the panel *before* you install the door; then remove the panel material as needed to allow for the installation of the door.

If you purchased a polycarbonate package (8mm twin-wall or corrugated), install those panels after installing the door. Panels or parts of panels will remain from the end panel kit resulting from the installation of the door.

5. Install the hood according to these instructions and those provided by the hood manufacturer.

# Important Information



## fabric structures and greenhouses

### YOU MUST READ THIS DOCUMENT BEFORE YOU BEGIN TO ASSEMBLE AND INSTALL THE DOOR KIT.

Thank you for purchasing this ClearSpan™ door kit. When properly assembled and maintained, this product will provide years of reliable service. These instructions include helpful hints and important information needed to safely assemble and properly maintain the door. Please read these instructions **before** you begin.

### SAFETY PRECAUTIONS

- Wear eye protection.
- Wear head protection.
- Use a portable GFCI (Ground Fault Circuit Interrupter) when working with power tools and cords.
- Do not climb on the framing during or after construction.

**⚠ WARNING:** The individuals assembling this door frame are responsible for designing and furnishing all temporary bracing, shoring and support needed during the assembly process.

For safety reasons, those who are not familiar with recognized construction methods and techniques must seek the help of a qualified contractor.

### IMPORTANT NOTICE:

The installation instructions for the roll-up door and the door hood are included with those components.

This manual describes the installation of the door frame and the hood brackets required for the roll-up door and hood only.

These roll-up door kits are designed to install in our roll-form buildings of different widths. The 4" x 4" tubes used for the jambs and header must be cut to size for some building widths, especially the 20' and 24' wide structures. As a result, material will be leftover for some frame widths.

### REQUIRED TOOLS

The following list identifies the main tools needed to assemble the door frame. *Additional tools and supports may be needed depending on the structure, location, and application.*

- Tape measure or measuring device.
- Fine point marker to mark the location frame members.
- Variable speed drill and impact driver (cordless with extra batteries works best); impact socket set.
- Drill, assorted drill bits, and center punch.
- Power saw to cut 4" x 4" metal tubes to required length.
- Hammers, gloves, and eye and hearing protection.
- Strap (or cable) to lift jambs and header into position.
- C-Clamp or similar clamp to holder 4" x 4" tubes and clamps during drilling process.
- Ladders, work platforms, and other machinery for lifting designed to work safely at the height of the door and door frame.

**ATTENTION:** Consult the services of a qualified, professional contractor if you are not familiar with the construction of similar frame structures and components.

## Important Information

### ASSEMBLY PROCEDURE

Following the instructions as presented will help ensure the proper installation of the door frame. The steps outlining the assembly process are as follows:

1. Verify that all parts are included in the shipment. Notify Customer Service for questions or concerns.
2. Read these instructions, the Must Read document, and all additional documentation included with the shipment **before** you begin.
3. Gather the tools, bracing, ladders (and lifts), and assistance needed to install the door and door frame.
4. Read the care and maintenance information at the end of these instructions.
5. Complete and return all warranty information as instructed (if present).

### UNPACK AND IDENTIFY PARTS

The following steps will ensure that you have all the necessary parts **before** you begin.

1. Unpack the contents of the shipment and place where you can easily inventory the parts. Refer to the Bill of Materials/Spec Sheets.
2. Verify that all parts listed on the Bill of Materials/Spec Sheets are present. If anything is missing or you have questions, consult the parts guide and all diagrams for clarification, or contact customer service.

**NOTE:** At this time, you do not need to open the plastic bags containing smaller parts such as fasteners and clamps (if equipped).

### QUICK START DIAGRAMS

For a quick overview of the end wall, door, and components, consult the diagrams located at the back of these instructions and those supplied with the door and door hood.

|   |                | Door Kit Skus |             |
|---|----------------|---------------|-------------|
|   |                | R020B00013A   | R024B00013A |
| Part#   | Description    | Quantities    |             |
| S40P096   | 4" x 4" x 96"  | 1             | —           |
| 104258  | 4" x 4" x 120" | —             | 1           |
| 104261  | 4" x 4" x 180" | 2             | 2           |
| 108978  | Door Hood      | 1             | 1           |
| 110175  | 8' x 8' door   | 1             | —           |
| 110176  | 10' x 8' door  | —             | 1           |
| *Measure and cut the 4" x 4" x 180" tubes (104261) to the required jamb length and attach to the frame. |                |               |             |

### PARTS IDENTIFICATION

The following graphics will help identify the different hardware for the door frame kit. (Some parts may not be shown.) Parts are not to scale.



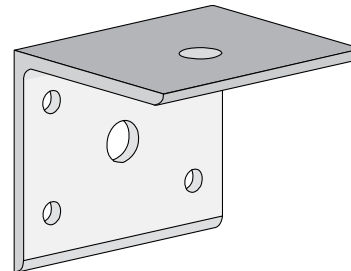
108506  
Mounting Bracket (8\*)—no holes  
(\*Two (2) brackets are not used for the 20' wide frame.)



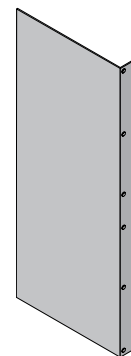
100441  
Nut Driver (1)



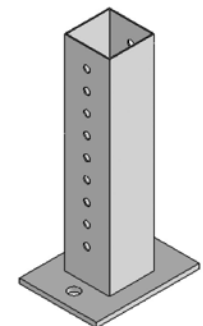
110177  
Post Cap (2)



EWHB1P  
Mounting Bracket (2)



108575  
Hood  
Bracket (2)



106762  
Column Base  
Connection Insert (2)

| Part Number | Description            | Quantity |
|-------------|------------------------|----------|
| 104773      | 1/2" x 3" bolt and nut | 2        |
| 104188B     | 1/2" x 5-1/2" bolt     | 6        |
| FAME09B     | 1/2" flat washers      | 16       |
| FALB08B     | 1/2" nuts              | 6        |
| FA4482B     | #14 x 1-1/2            | 100      |
| QH1330      | variable angle bracket | 2        |
| 102897      | 1.5" x 1.5" x 99" tube | 2        |

# Door Frame Assembly

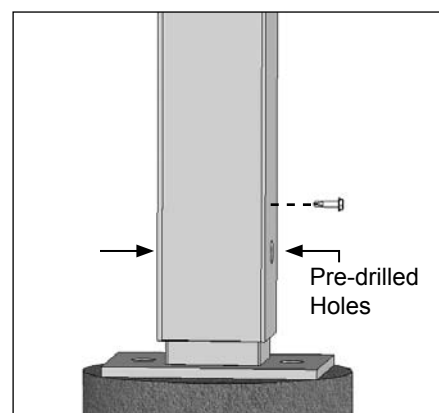
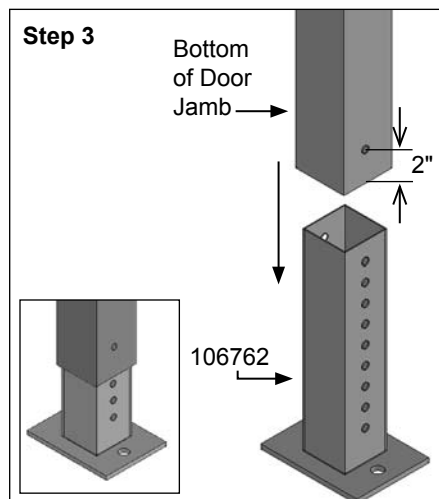
## ASSEMBLING THE DOOR FRAME COMPONENTS

Consult the diagrams at the back of these instructions *before* you begin. Assistance is required to assemble the door frame.

### INSTALL THE DOOR JAMBS

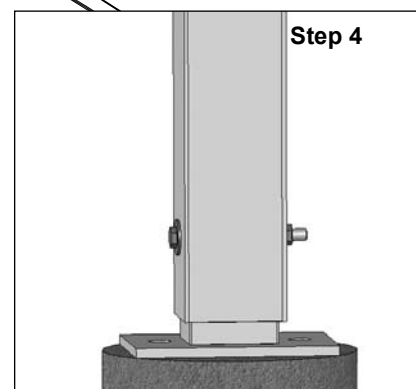
The following steps describe one way to set the door jambs.

1. At ground level, measure *between the legs of the end rafter* to locate the center of the end wall. Use a plumb line to identify the center of the end rafter and mark that location on the ground as well. (See Quick Start guide.)
  2. Using the dimensions on the End Wall Frame diagrams in the Quick Start section, locate the positions of the door jambs and dig a 12" diameter hole (minimum size) *at the jamb locations* to a depth that is below the geographic frost line. (Consult a professional contractor if needed.) Fill each hole with concrete and allow the concrete to set.
- NOTE:** Top of finished concrete should be at the finished grade to attach the 106762 column base. Customer-supplied wedge anchors are used to secure each 106762 mounting bracket to the concrete.
3. Measure the length needed for a single jamb based on the dimensions of the door and building width, and cut the jamb to length. Remember to account for the post cap length. Final adjustments in length are made using the holes of the column base. Jamb material for the 30' and 35' wide frames may not need cut, depending on the door size.
  4. Once the jamb is the required size, measure 2" from one end, find the center of the jamb, and drill a 9/16" hole at that location. Insert the 106762 column base into the jamb, align the lower set of holes with the hole in the jamb, and temporarily secure using a Tek screw.
  5. Finish drilling the mounting hole through the other side of the jamb using the column base holes as guides to keep the holes aligned. Slide a flat washer (FAME09B) onto a 1/2" x 5-1/2" bolt (104188B), insert the bolt through the mounting hole, add another flat washer (FAME09B), and nut (FAME09B). Tighten bolt slightly. Remove Tek screw. *Final tightening of the bolt occurs later.*



Frame shown may differ in height and width from the actual frame.

Step 3: Measure the length needed to reach the rafter **based on the width of the door**. Remember to account for the installation of the post cap. See next page for details. Depending on the door and building frame width, jamb tubes may not need cut.



Ground Level/Finished Grade

## Door Frame Assembly

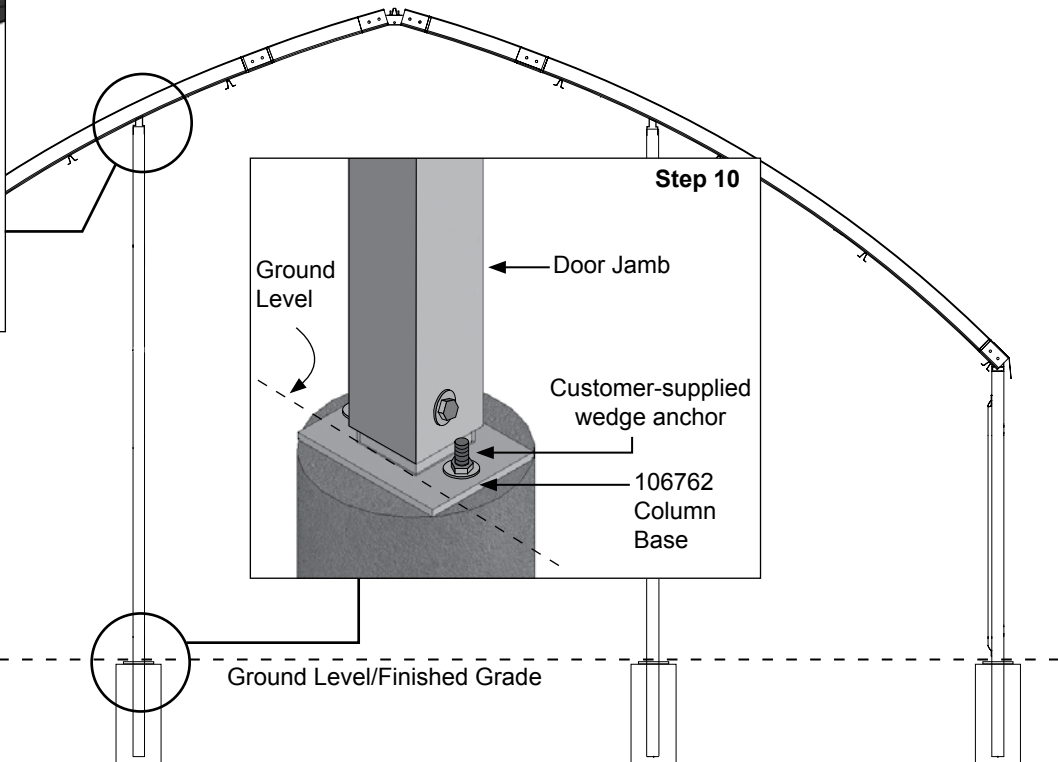
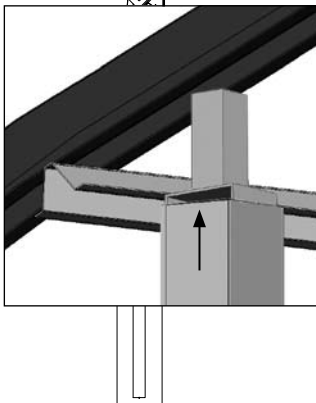
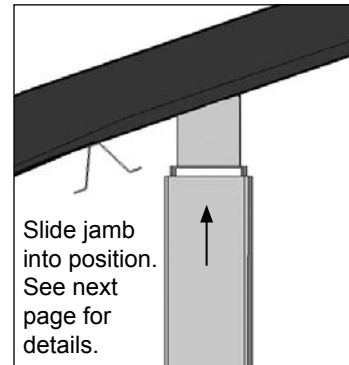
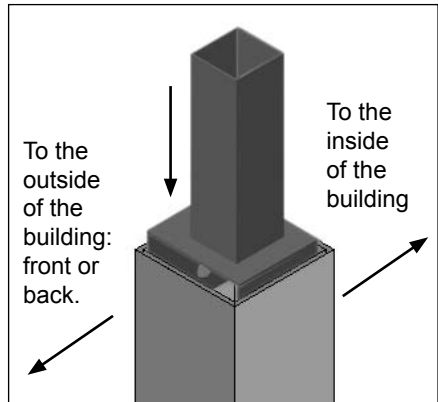
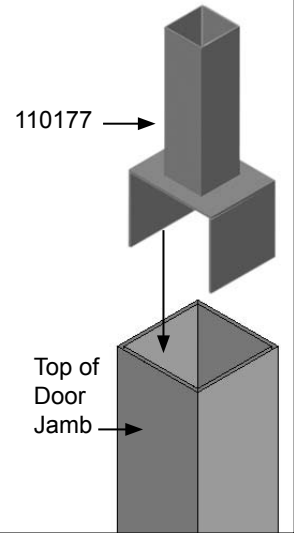
6. Repeat the steps to prepare the remaining 4" x 4" door jamb and to attach the remaining column base to the jamb.
7. Move to the other end of each door jamb and slide a post cap into the top of the jamb tube. Consult the diagrams to the right to ensure you have installed the post cap properly.
8. After the concrete sets and with the proper lift, use straps (or cables) to lift jamb tube into position. Set the mounting plate of the column base as shown with the *pre-drilled mounting holes aligned with the end rafter*. See diagrams.
9. Using the 106762 column base as a template, mark the positions of the bracket mounting holes on the concrete pier. *Verify that the jamb is plumb before marking the holes*. Align the post cap of the door jamb with the underside of the end rafter.

**NOTE:** The 110177 post cap end is designed to extend up and into the channel of the roll-form rafter. If you are installing the door in a building that is not one of our roll-form buildings, consult a contractor when setting the door jambs. Additional steps and customer-supplied materials and fasteners may be required.

10. Drill the lower mounting holes in the concrete piers. Drill the mounting hole according to the customer-supplied anchor bolt size. **Recommended wedge anchor size is 3/4"**. Do not drill into concrete until the concrete is set. Door jambs should be properly spaced for the door and with the post cap aligned with the underside of the end rafter. See the end wall diagrams near the back of these instructions.
11. Secure the 106762 column base of the first jamb to the concrete by tightening the customer-supplied wedge anchor bolts.

### Step 7

Actual post cap may differ.



# Door Frame Assembly

## ASSEMBLING THE DOOR FRAME COMPONENTS (continued)

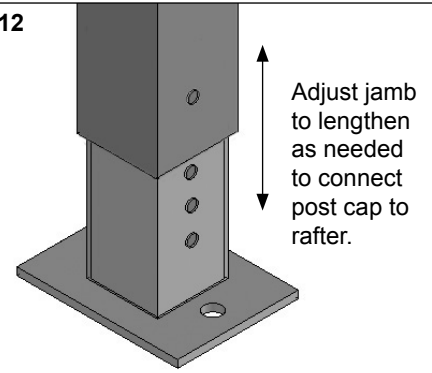
12. With the lower end of the first door jamb in place and the post cap bracket aligned in the end rafter, verify that the jamb is the correct length to secure to the end rafter.

**NOTE:** If the first/lower set of holes of the 106762 column base is adequate, tighten the 1/2" x 5-1/2" bolt (Step 5) to secure the base to the jamb. If additional length is needed so the post cap extends up and into the end rafter, remove the 1/2" x 5-1/2" bolt, lift the jamb to the correct set of holes, and install and tighten the bolt.

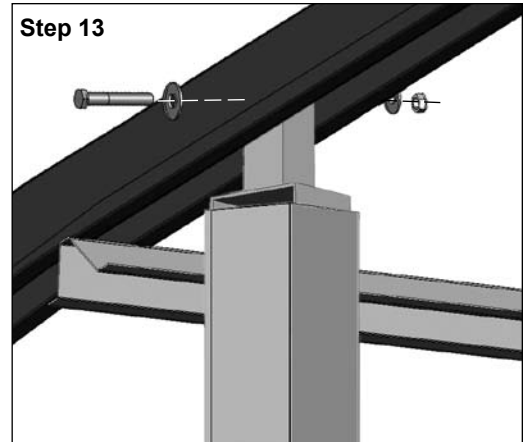
**Adjustments less than 1-1/2", which is the spacing between the 106762 column base mounting holes, are made by sliding the post cap up to meet the rafter. First adjust jamb length using the base mounting holes; then adjust post cap as needed.**

13. Verify that the door jamb is plumb, slide the post cap up so it meets the rafter as shown and clamp or secure jamb in place. A C-clamp or a similar clamp will work. Drill a 9/16" hole through the rafter and post cap and secure the post cap to the rafter using the 1/2" x 3" bolt, flat washers, and nut.
14. Install two (2) Tek screws on each side of the jamb to secure the post cap. See lower diagram to the right. Do not install on the front or back surface of the jamb tube. Door track for roll-up door will attach to either of these surfaces, depending on door style.
15. Repeat the steps to prepare and install the remaining jamb. Verify that the distance between the jambs matches what is required for the door installation.
16. With both jambs in place, return to all bolts and screws and verify these are tight.

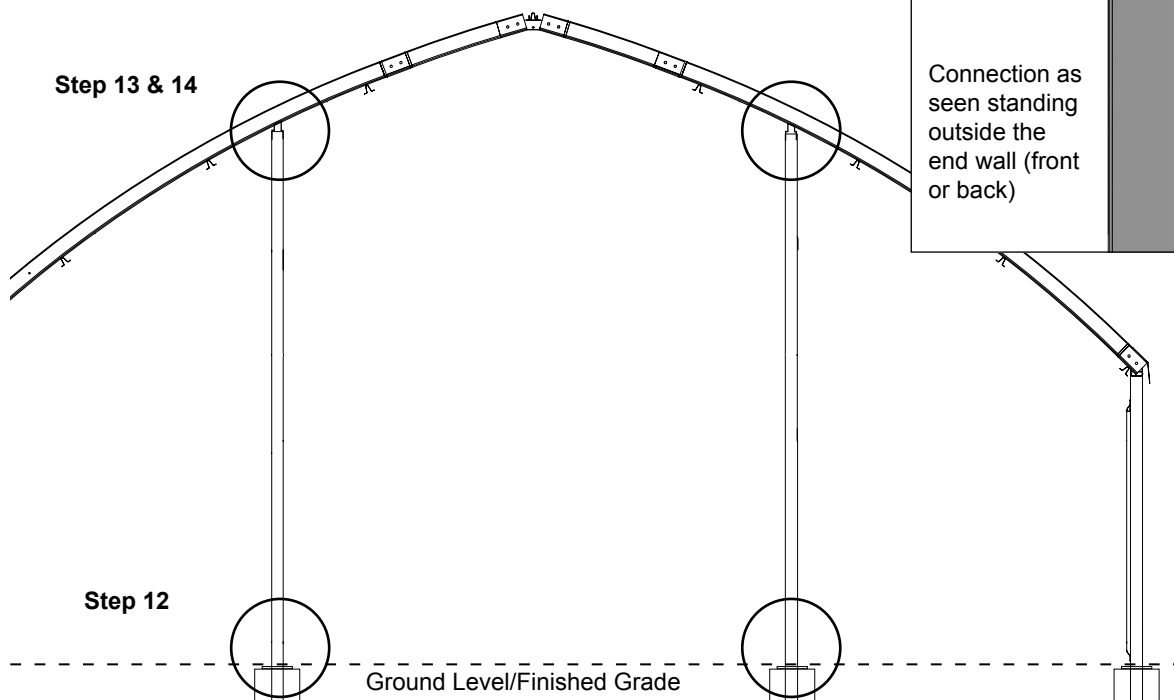
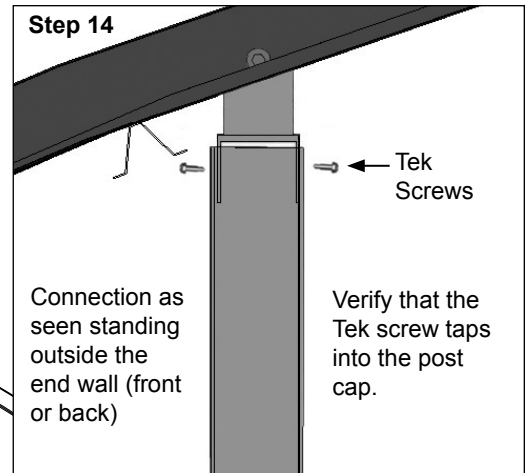
Step 12



Step 13



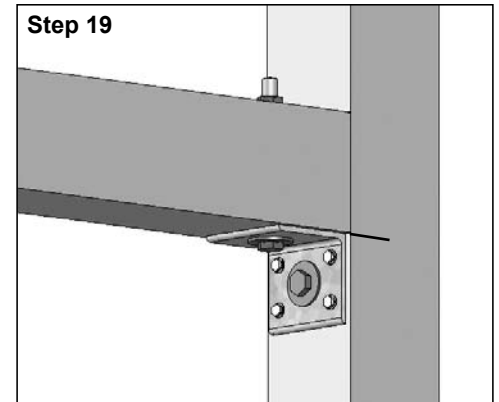
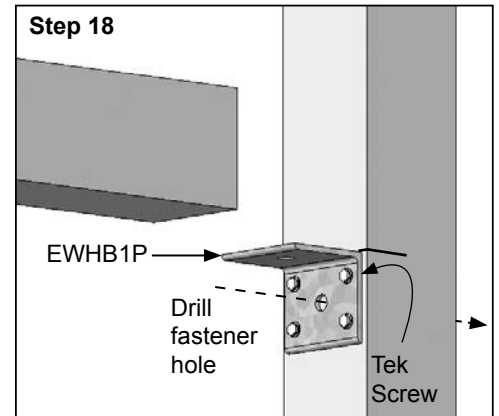
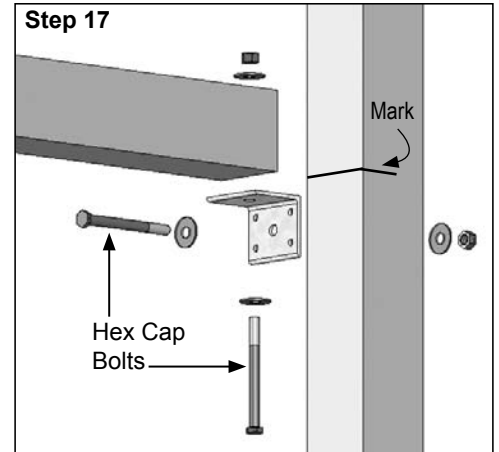
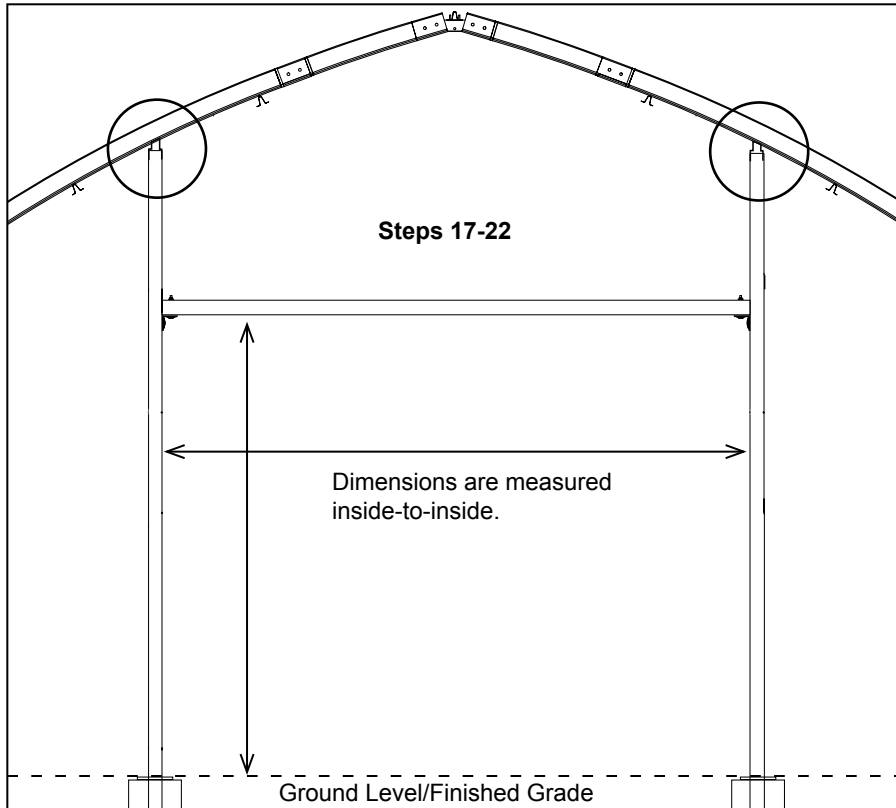
Step 14



## Door Frame Assembly

### ASSEMBLING THE DOOR FRAME COMPONENTS (continued)

17. After installing the door jacks, measure and mark the height of the header. *Consult drawing below, the Quick Start section located at the back of these instructions, and the information on Page 2 for the correct dimension for your door.* Measure from finished grade along each jamb to mark the lower edge of the 4" x 4" header.
18. Take one EWHB1P header bracket and secure it to one jamb. Align the upper edge of the bracket with the mark on the jamb and secure in place using four (4) Tek screws.
19. Drill a 9/16" hole through the 4" x 4" jamb using the center hole in the bracket as a guide. Secure using a 1/2" x 5-1/2" bolt (104188B), FAME09B flat washers, and nut (FAME09B).
20. Repeat the steps to attach the remaining header bracket to the remaining door jamb. Adjust the bracket height as needed to ensure that the header is level when installed.
21. Take the 4" x 4" header tube and, with assistance and the proper lift, set it in place on the installed header brackets. **Use a C-clamp or similar clamp to hold the header in place.**
22. Mark the hole location for the header mounting bolt and repeat the steps as needed to drill and install the 104188B mounting bolt to secure header. Repeat as needed for the remaining header bolt.
23. Check all mounting bolts to ensure they are tight.
24. With the door frame assembled, *continue with the installation of the roll-up door. Consult the information on Page 2 before you install the roll-up door. Use the instructions sent with the roll-up door to complete the installation of the door.*



## Door Frame Assembly

### INSTALL THE 108575 HOOD BRACKETS

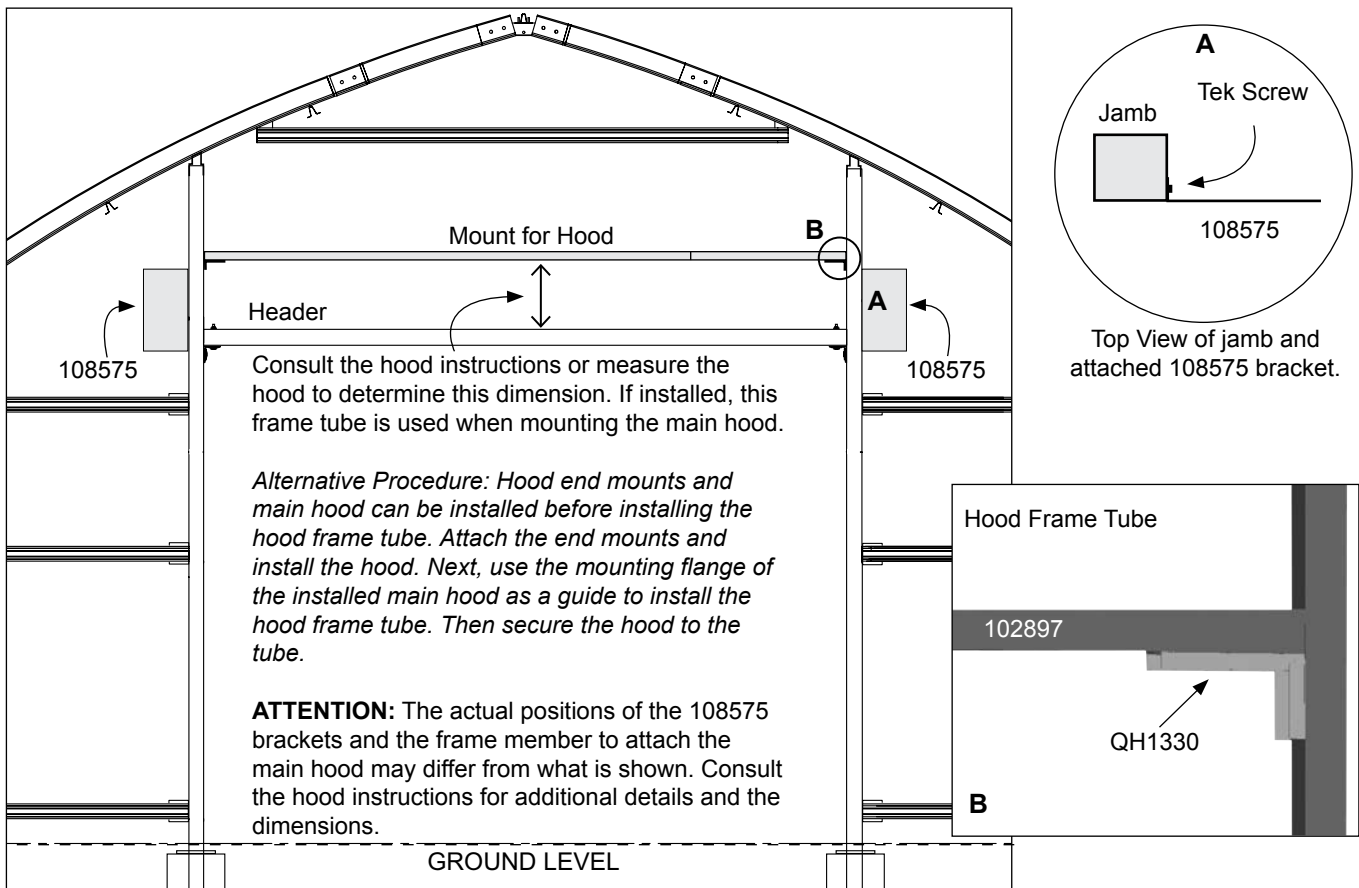
Hood brackets are installed *after* the door is installed and before attaching the hood. ***If you have not installed the roll-up door, complete that installation and then continue with the installation of the 108575 brackets. All end wall cover (panels, polycarbonate sheets, etc.) must be installed before you secure the hood to the end wall. Additional customer-supplied materials may be required depending on the cover type and end wall design.***

Attach one 108575 hood bracket to the outside of each installed door jamb. Complete these steps:

1. Review the instructions sent with the roll-up door hood *before you continue with these instructions*. Dimensions presented in that document are critical to the installation of the these 108575 hood brackets.
2. Using the door as a guide and the installation instructions for the roll-up door hood, place one 108575 hood bracket against the door jamb and position it as needed to provide the necessary clearance for the roll-up door. If the upper edge of the bracket extends above the *top of the building end rafter and roof finish*, use metal snips to trim the 108575 bracket so that it remains below the top edge of the end rafter. Does not apply to all frames.
3. Using six (6) FA4482B Tek screws, attach the 108575 hood bracket to the door jamb as shown. Repeat the steps to install the remaining hood bracket. The 108575 brackets are used to install the roll-up door hood only. *They are not used for the installation of the roll-up door. Install bracket flush with the outside face of the jamb. See A below.*
4. With both 108575 brackets attached, continue with the installation of the roll-up door hood. Use the instructions sent with the hood. If the FA4482B Tek screws (supplied) are not the correct fasteners to secure the hood to your end wall, purchase the correct fasteners locally. Use the Tek screws to secure hood to 108575 brackets.

**NOTE:** The main hood of the roll-up door hood requires a surface to attach to. If needed, measure the hood dimensions or examine the hood instructions, and prepare and attach the 1.5" x 1.5" square tube between the jambs as shown below. The frame member serves as the mounting surface for the main hood.

5. Read the care and maintenance information that follows and all remaining door and door hood documentation.



# Care and Maintenance

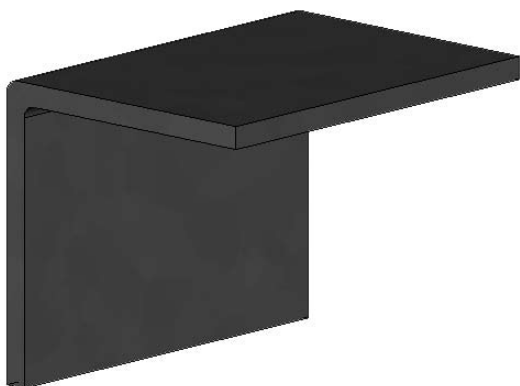
## ADDITIONAL BRACKETS

Additional 108506 end wall brackets have been included with your door kit. Use these brackets to attach the end wall girts from the end frame kit if purchased.

These additional brackets can be attached to the installed door jambs using Tek screws sent with the door kit. Once installed, the end wall girts are secured to each bracket.

Brackets are universal and can be attached as needed in the position that best serves the installation of the end wall frame and any panels used to cover the end wall.

Consult the instruction manuals sent with any accessory for your roll-form building for additional assembly details.



108506

Mounting Bracket (Quantity: 8\*)—no holes

(\*Depending on frame width, some brackets are not used.)

**ATTENTION:** It is the responsibility of the owner/contractor to determine whether the brackets are needed based on the end wall. In those instances where a custom or customer-supplied end wall frame exists, the brackets may not be needed.

In those cases, use the brackets for other projects or recycle as desired.

## CARE AND MAINTENANCE

Proper care and maintenance of the door and door frame is important. Check the following items periodically to properly maintain the door and door frame:

- *Inspect all components regularly and frequently.*
- Do not climb or stand on the shelter or end frame at anytime.
- Check connections and all fasteners to verify that they remain tight.
- Remove debris and objects that may accumulate on the shelter. Use tools that will not damage the cover (if equipped) when removing debris.
- Check the contents of the shelter to verify that nothing is touching the door that could cause damage or interfere with the door operation.
- To prevent damage, do not stack anything against the door. Keep snow cleared from around the door and the door track.
- Read all documentation sent with the door and follow all maintenance schedules and procedures.
- *Replace all worn or damaged parts promptly.*
- Check all brackets frequently to ensure that these remain tight and in good condition. Replace or repair damaged brackets immediately.
- Check the hood and all related mounting bolts, brackets, and frame members. Tighten, repair, or replace as needed.
- To prevent damage and possible injury, do not allow excessive snow and ice to buildup on the hood.
- Consult the documentation that shipped with the hood and roll-up door for additional information.

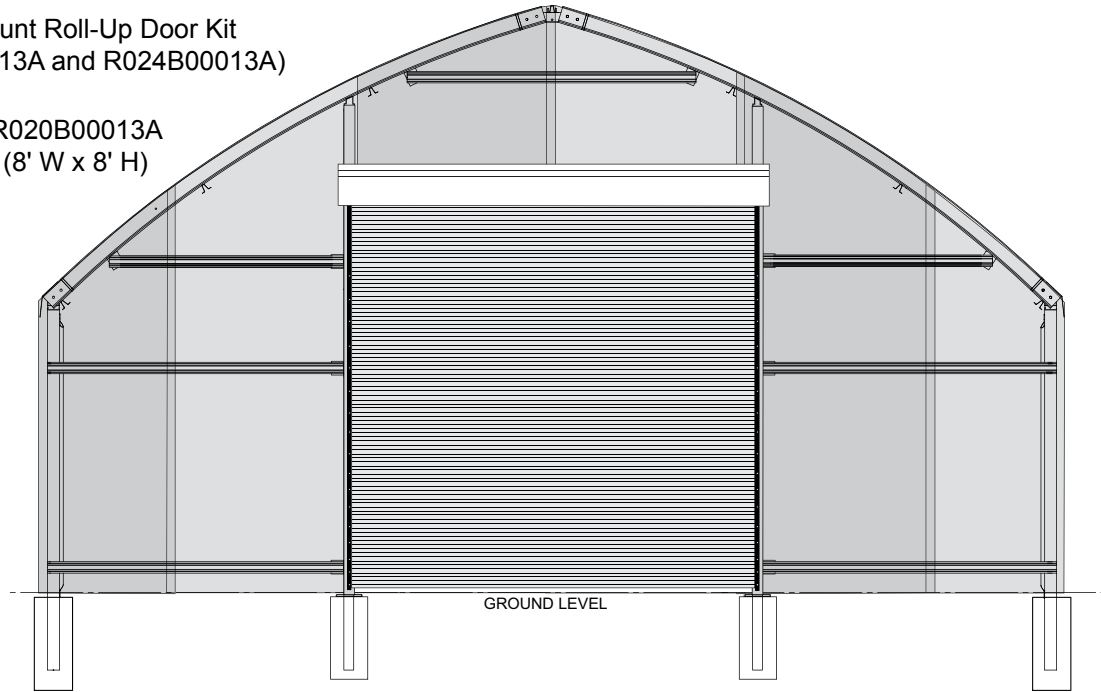
# Quick Start Guide



## QUICK START GUIDE

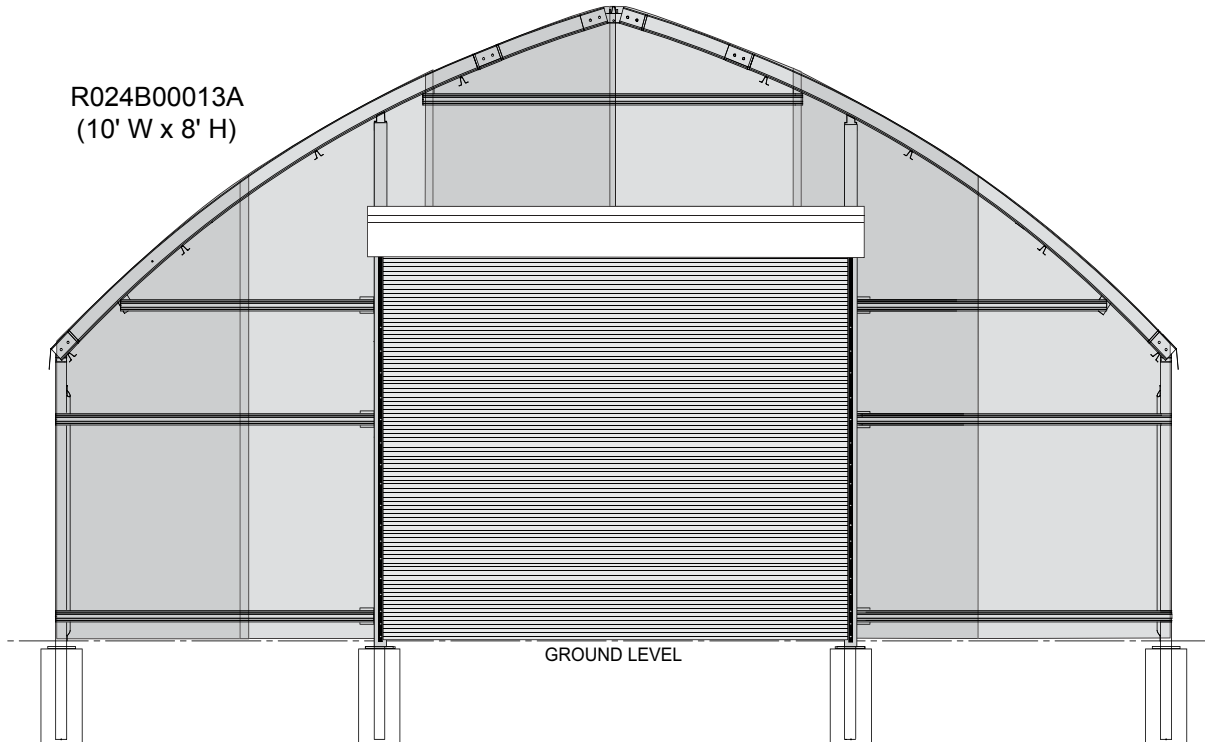
Exterior Mount Roll-Up Door Kit  
(R020B00013A and R024B00013A)

R020B00013A  
(8' W x 8' H)



End frame and end rafter are not included with any door frame kit. A 20' wide frame is shown above; 24' wide frame is shown below. Installation is similar for other frame widths.

R024B00013A  
(10' W x 8' H)



**ATTENTION: ACTUAL FRAME MAY DIFFER!**

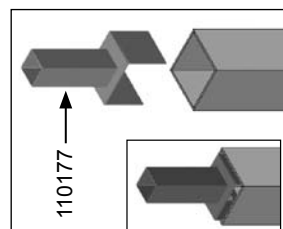
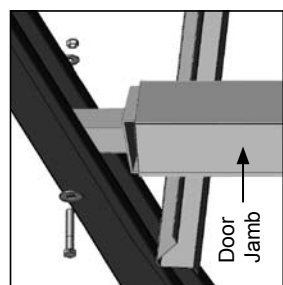
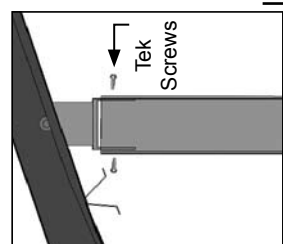
Use the R020B00013A (8' x 8') door kit for the 20', 24', 30' or 35' wide roll-form end wall frame.

Use the R024B00013A (10' x 8') door kit for the 24', 30', or 35' wide roll-form frames. *The 10' x 8' door will not fit the 20' wide roll-form end frame.*

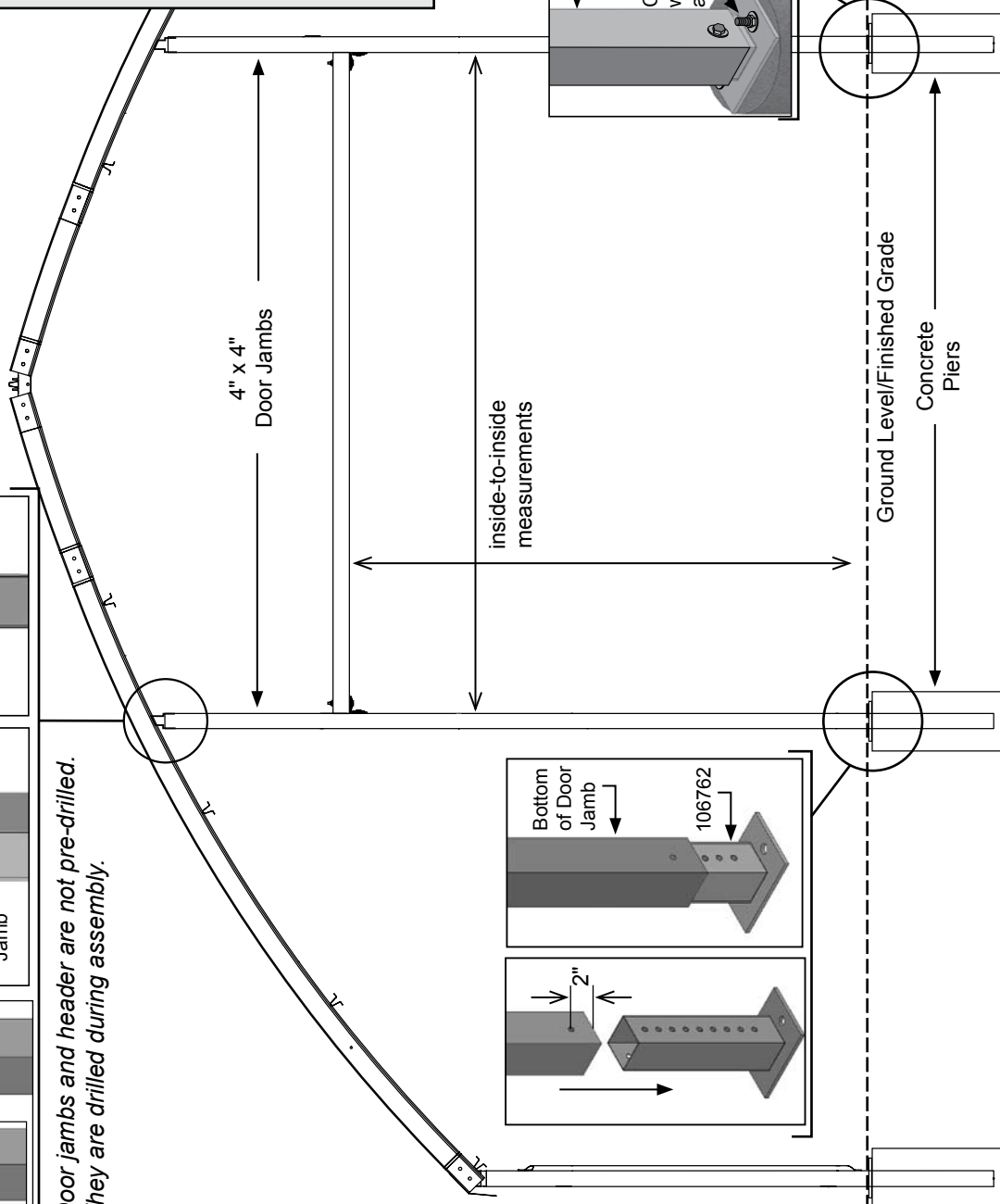
# Door Frame Layout - Door Jambs

## BASIC INSTALLATION STEPS

1. Cut jamb columns to length if needed.
2. Insert a 110177 post cap and 106762 column base into each 4" x 4" door jamb. Mark the lower hole locations on the bottom of the door jambs and drill the 9/16" holes. Secure with the mounting bolts.
3. Set the door jambs in place, verify door dimensions, and bolt the column base to the concrete piers using customer-supplied wedge anchors.
4. Adjust height of jambs as needed and secure post caps to end rafter and top of jamb. Tighten base mounting bolts.
5. Check all bolts and tighten if needed.
6. Continue with the installation of the header brackets and the header.



Door jambs and header are not pre-drilled. They are drilled during assembly.



# Door Frame Layout - Door Header

## BASIC INSTALLATION STEPS

1. With the door jams installed, measure and mark the height of the rough door opening.
2. Attach the header brackets to the door jams.
3. Set header in place on the brackets, drill mounting holes, and secure using the 104188B mounting bolts.
4. Check mounting bolts and tighten if necessary.
5. Continue with the installation of the door and door hood as described in the instructions sent with those items.

